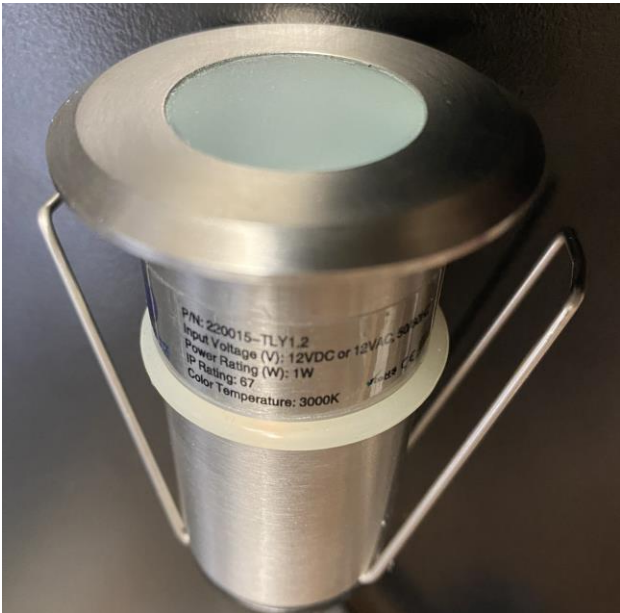




**SOURCE**  
LIGHTING CO.

# Installation Instructions of Recessed Mini Spot & Wash Light

Model # SRULW



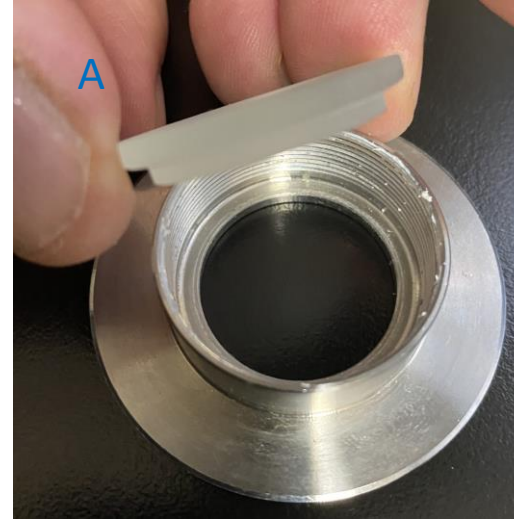
Model # SRULNS SpotLight  
Model # SRULW Wash Light

Model # SRULNS



Note: The SRULNS Spotlight comes with a clear lens. If the installer wants to cut down on the light output, you can change the lens to a frosted lens As follows:

# 1. You are going to need to purchase some TEFLON thread sealant

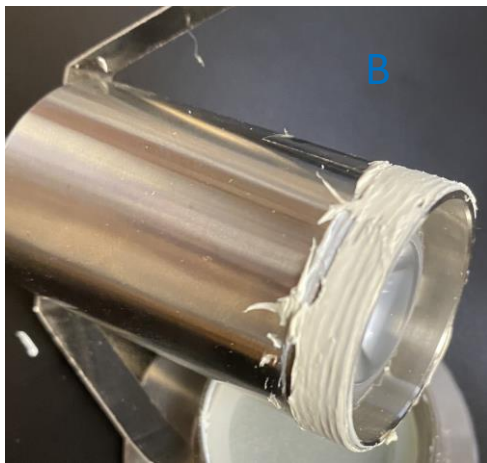


# 2. Unscrew the Top Flange from the body of the fixture

# 3. Remove Glass Lens and Gasket

# 4. Clean any Teflon particles from inside flange and on body

# 5. Place new Frosted Lens with gasket on top in flange as shown



# 6. Put Teflon Paste on Male section of threads, Use finger to smooth out Teflon  
# 7. Blow any debris that might have collected in LED chamber out, make sure no water is present.

# 8. Screw Top flange and body back together snug,

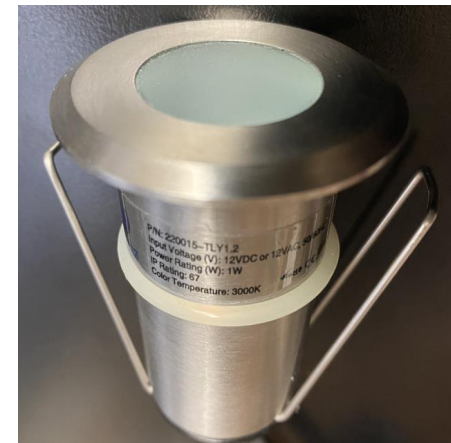
# 9. Wipe off excess Teflon





**SOURCE**  
LIGHTING CO.

Both Units are provided with a polycarbonate black mounting sleeve. This is to be used when installing in a concrete pour. It is strongly advised to provide additional void space below the mounting sleeve base using a plastic cup or similar device to create extra void that will allow extra slack wire should unit ever need servicing. Also be sure to install flexible conduit sleeve such as Cast model # CSISC conduit ( .35" I.D. .51" O.D. ) 82 foot roll to run wire in.







**SOURCE**  
LIGHTING CO.

**Installer Take Note When Mounting In A Wood Deck :** After drilling the mounting holes before placing fixture in hole make sure **spring arms** are taped against body of fixture or broken off otherwise the spring arms will make it impossible to remove fixture from deck.



For installation in **Wood Deck** Surface use 1-7/16" hole saw ( 1.4375" inch OD ) MSC # 86041431 MFR# 49-56-0077.  
You will also require a hole arbor MSC # 87463071 MFR# 49-56-7250



Search by keyword or part number...



[Products](#) [Solutions](#) [Resources](#) [Special Offers](#) [Catalogs](#) [Better MRO](#) [Notifications](#)

Save on orders over \$99\*. Enter Code **TT99H** [Click to Apply](#)

[Home](#) / ... / [Hole Saws](#) / #86041431

[Print](#) [Email](#)



MILWAUKEE TOOL

## Hole Saw: 1-7/16" Saw Dia, 1-1/2" Cut Depth

Bi-Metal, Toothed Edge

MSC# 86041431

Mfr# 49-56-0077

[Write the first review](#)

Quantity

1

List Price  
Web Price  
You Save

~~\$10.87 ea.~~  
**\$7.20 ea.**  
\$3.67 ea.

Total

**\$7.20**

[Add to Cart](#)

✓ **21 In Stock**

📍 7 available in Harrisburg, PA

🚚 Delivered as soon as **Next Business Day\***

🛡️ **Hassle Free Guarantee** [Learn More](#)  
We'll exchange or refund any product that doesn't meet your expectations.

📖 **Big Book Catalog** [View Alternatives](#) Page# 256

[View Compliance and Restrictions](#)

🛒 **Previously Purchased Item**



MILWAUKEE TOOL

## Hole Saw Arbor: 6" Saw Dia, Straight Shank, Drill Pilot

Quick-Change Attachment

MSC# 87463071

Mfr# 49-56-7250

★★★★★ 3.1

22 reviews

[Write a Review](#)

Quantity

1

List Price

~~\$39.03 ea.~~

Web Price

**\$25.72 ea.**

You Save

\$13.31 ea.

Total

**\$25.72**

[Add to Cart](#)

✓ **192 In Stock**

📍 49 available in Harrisburg, PA

🚚 Delivered as soon as [Next Business Day](#)

✓ **Hassle Free Guarantee** [Learn More](#)  
We'll exchange or refund any product that doesn't meet your expectations.

📖 [Big Book Catalog](#)

[View Compliance and Restrictions](#)

ⓘ The price of this product reflects recent trade tariffs. Need help finding a product not impacted by a tariff? Give one of our experts a call at [1-800-645-7270](tel:1-800-645-7270)



# SOURCE

LIGHTING CO.

Installation in Concrete Capstone etc: Brand : GUICGOC 35MM Concrete Hole Saw Amazon.  
**Buy Several to allow each bit to cool off before reusing.**



Roll over image to zoom in

**MFG PN**  
**BOBCFVF4TQ**



35mm ( 1-3/8 inch ) Concrete Hole Saw with 220mm SDS Plus Shank Connecting Rod , Tungsten Carbide Teeth ( 7.7mm x 4mm) Cement Hole Saw for Concrete Cement Brick Wall Stone (35mm ( 1-3/8 inch ))

Brand: GUICGOC

★★★★☆ 14 ratings

\$13<sup>99</sup>

✓prime

With Amazon Business, you would have saved \$149.87 in the last year. Create a free account and save up to 2% today.

Get \$125 off: Pay \$0.00 upon approval for the Amazon Business Prime Card. Terms apply.

Style:

35mm ( 1-3/8 inch ) ▾

Brand	GUICGOC
Style	35mm ( 1-3/8 inch )
Compatible Material	Glass, Ceramic, Stone
Number of Pieces	1

#### About this item

- Cutting Diameter: 35mm ( 1-3/8 inch )
- ROD: 220mm / 8.66 inch SDS Plus Shank Connecting Rod
- MATERIAL: Tungsten Carbide Teeth ( 7.7mm x 4mm ) and Alloy steel
- WHAT YOU WILL GET: 1x hole saw, 1x 220mm connecting rod, 1x Center positioning drill bit, 2x positioning drill screw
- APPLICATION: For Concrete Cement Brick Stone Wall.
- NOTE: Not for Ceramic , Tile , Glass .

Report incorrect product information.



Diamond Drill Bits with PU Case 10PCS...

★★★★☆ 42

\$9<sup>71</sup> ✓prime

10% off coupon

\$13<sup>99</sup>

✓prime

FREE delivery **Thursday, March 2**. Order within 6 hrs 12 mins

Deliver to David - Ridgewood 07450

**Only 2 left in stock - order soon**

Qty: 1 ▾

Add to Cart

Buy Now

Payment	Secure transaction
Ships from	Amazon
Sold by	GUOQEE
Gift options	Add at checkout

Return policy: Eligible for Return, Refund or Replacement within 30 days of receipt ▾

Add to List

Have one to sell?

Sell on Amazon



Diamond Drill Bit Set Hole, 15PCS...

\$11<sup>39</sup> ~~\$11.99~~ ✓prime