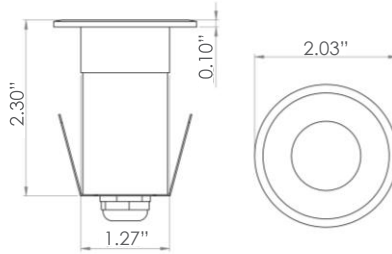




**SOURCE**  
LIGHTING CO.

## SRULNS

### RECESSED MINI NARROW SPOT UP LIGHT (1 WATT)



#### PRODUCT SPECIFICATIONS

Trim Material	Grade 304 Stainless Steel
Trim Finish	Polished Stainless steel
Glass	Tempered Clear glass
Optic	High temperature Japanese Acrylic
Fixture Material	Grade 316 Stainless Steel
Sleeve Material	Black Polycarbonate
Static Load Pressure	750kg
Binning	3 Step MacAdam
Wiring	1 meter of 2 core 0.75mm <sup>2</sup> rubber cable
Life Span	50,000 hours

LED Chip	Nichia
Power Consumption	1W
Input Voltage	12VAC, 50/60 Hz or 12VDC
Operating Temperature	from -4° to 149° F
Color Rendering Index	>85
Warranty	5 years against manufacturing defects
Agency Approval	CE, RoHS

Standard offering of fixture is 3000K and 35° Beam Spread. Other color temperatures (2700K, 4000K & 6000K) and are available as a special order. Special orders require a minimum of 100 units and lead times for special orders are 8 weeks. Special orders require a 50% deposit on materials and any expedited freight charges will be the responsibility of the client.



Power (W)	Available color Temperatures	Luminous Flux			IP Rating	Available Beam Angles
		3000K	4000K	6000K		
1W	2700K 3000K 4000K 6000K	110lm/W	120lm/W	130lm/W	67	35°