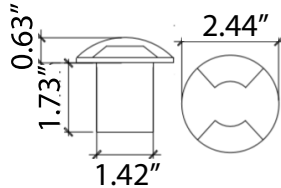




## SRDWL

### RECESSED MINI WALL TWO SIDED WASH LIGHT



#### PRODUCT SPECIFICATIONS

Trim Material	Grade 316 Stainless Steel	LED Chip	Nichia
Trim Finish	Polished Stainless steel	Power Consumption	3W
Fixture Material	Grade 316 Stainless Steel	Input Voltage	12VAC, 50/60 Hz or 12VDC
Fixture Finish	Polished Stainless steel	Operating Temperature	from -4° to 149° F
Sleeve Material	Black Polycarbonate	Color Rendering Index	>85
Diffuser	Semi-frosted UV resistant polycarbonate	Warranty	5 years against manufacturing defects
Static Load Pressure	750kg	Agency Approval	CE, ETL, RoHS
Binning	3 Step MacAdam		
Wiring	1 meter of 2 core 0.75mm <sup>2</sup> rubber cable		
Life Span	50,000 hours		

Standard offering of fixture is 3000K and 2x60° Beam Spread. Other color temperatures (2700K, 4000K & 6000K) are available as a special order. Special orders require a minimum of 100 units and lead times for special orders are 8 weeks. Special orders require a 50% deposit on materials and any expedited freight charges will be the responsibility of the client.



Power (W)	Available color Temperatures	Luminous Flux			IP Rating	Available Beam Angles
		3000K	4000K	6000K		
3W	2700K 3000K 4000K 6000K	110lm/W	120lm/W	130lm/W	67	2x60°